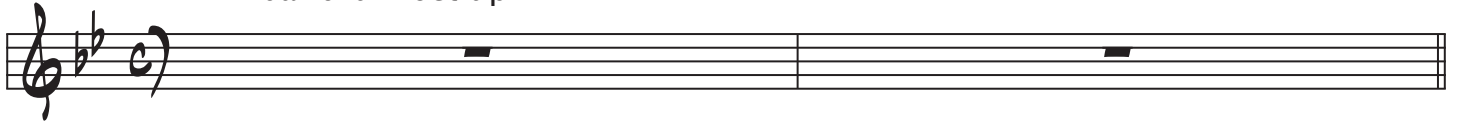


MARTINI MAYHEM

2-bar drum set up



(A) Bb7 tacet

Musical staff for section A, measures 3-4. It features a melodic line in Bb major with a key signature of two flats. Measure 3 starts with a triplet of eighth notes. Chords Eb9 and Bb are indicated below the staff.

3 Eb9 tutti Eb9 Bb 4x



(B) Eb9 organ line

Musical staff for section B, measures 7-8. It features a melodic line in Bb major. Chords Eb9 and F7 are indicated below the staff.

7 Eb9 F7 tutti

Musical staff for section B, measures 9-10. It features a melodic line in Bb major. Chords Eb9 and F7 are indicated below the staff.

9 Eb9 F7 tutti

(A) Bb7 tacet

Musical staff for section A, measures 11-12. It features a melodic line in Bb major with a key signature of two flats. Measure 11 starts with a triplet of eighth notes. Chords Eb9 and Bb are indicated below the staff.

11 Bb7 tacet Eb9 tutti Eb9 Bb 2x



SOLOS

Bb7

- open, until cue -

19

Eb9

20

Eb7

F7

tutti

24

(A) Bb7 tacet

28

Eb9

tutti

Eb9

Db

4x

30

(B) Eb9

(organ line, build on each repeat)

3x

32

Eb9

F7

tutti

36

Bb7(#9)

40