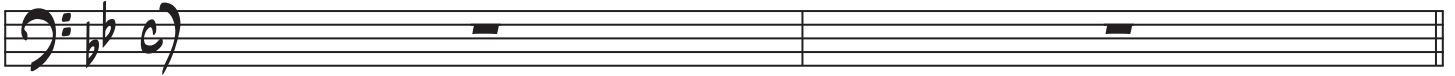


BASS
♩=110

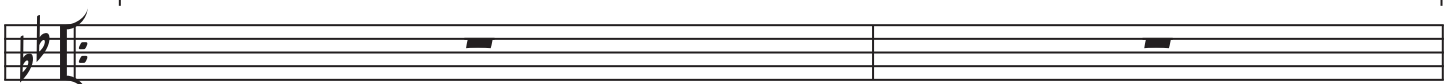
MARTINI MAYHEM

CHRIS MALLEY
© 6/27/2014

2-bar drum set up



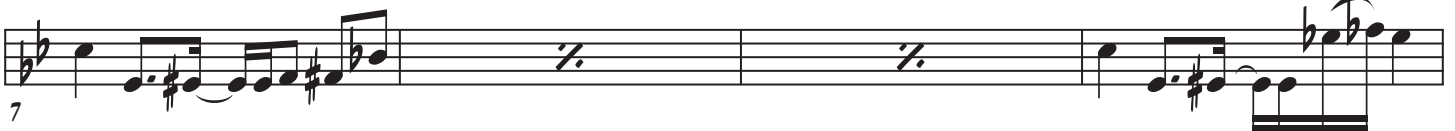
(A) $Bb7$ tacet



3 $Eb9$ $Eb9$ Db 4x



(B) $Eb9$

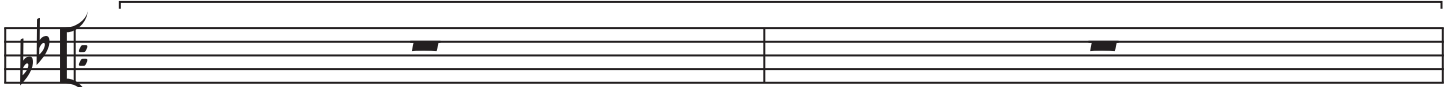


7 $Eb9$

F7



(A) $Bb7$ tacet



15 $Eb9$ $Eb9$ Db 2x

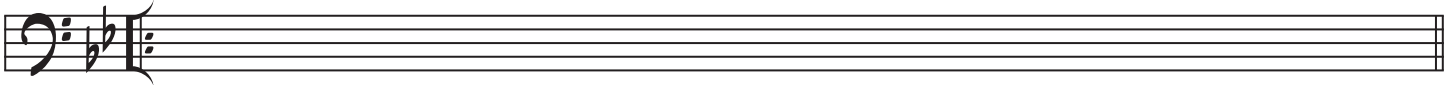


17

SOLOS

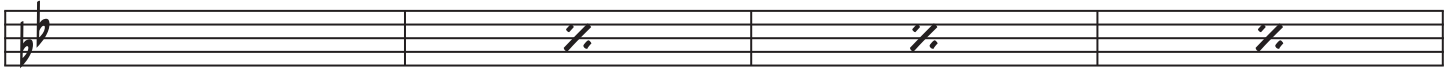
Bb7

- open, until cue -



19

Eb9



20

Eb7

F7



24

(A) Bb7

tacet



28

Eb9

Eb9

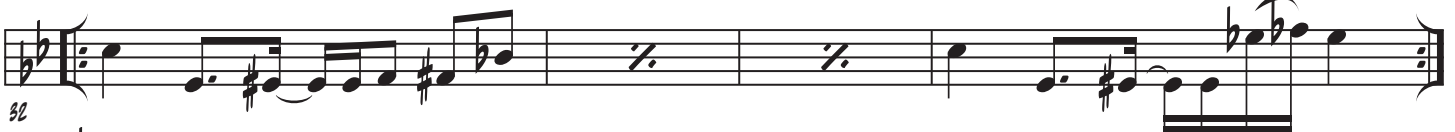
ob 4x



30

(B) Eb9

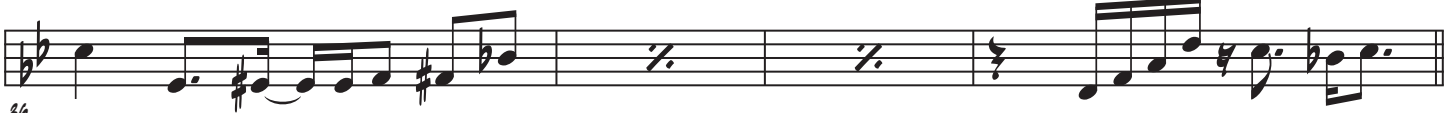
3x



32

Eb9

F7



36

Bb7(#9)



40