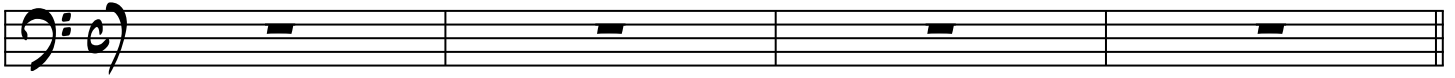


BASS  
♩=120

# CATALYST

- CHRIS MALLEY

drums & guitar



5 **A** G-

9 G- (same 4-bar pattern)

13 G-

17

21 **B** A-

25 A- (same 4-bar pattern)

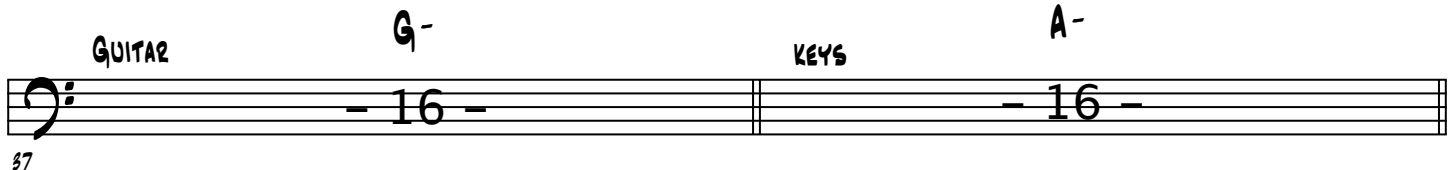
29 A-

33

# SOLOS (groove similar to )

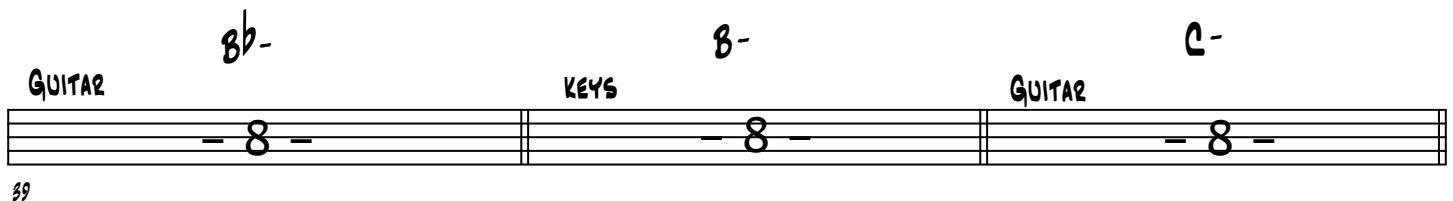
37

GUITAR  $G^-$  KEYS  $A^-$



39

GUITAR  $B^-$  KEYS  $B^-$  GUITAR  $C^-$



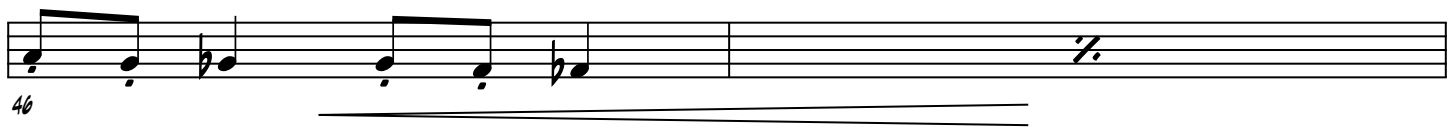
42



(D.S. AL CODA)



46



48

